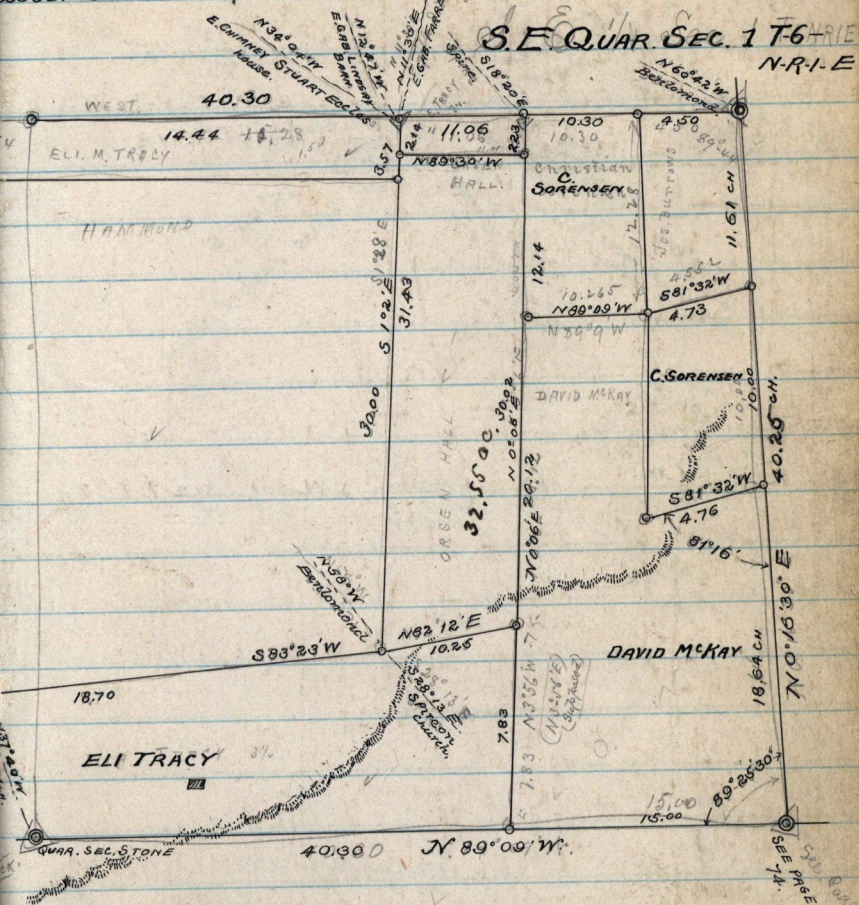


October 6-1885-

Oct 6-1885

S.E. QUAR. SEC. 1 T-6 R-1 E
N-R-1-E



Dr running $88^{\circ}51'W$ 40.30 ch from the S.E. cor. of Sec. 1. we ran 1.41 ch South from the South West corner of the S.E. 1/4 of Sec 1 - Making the said line $789^{\circ}09'W$

Eli A. Tracy 3.50
Orsen Hall